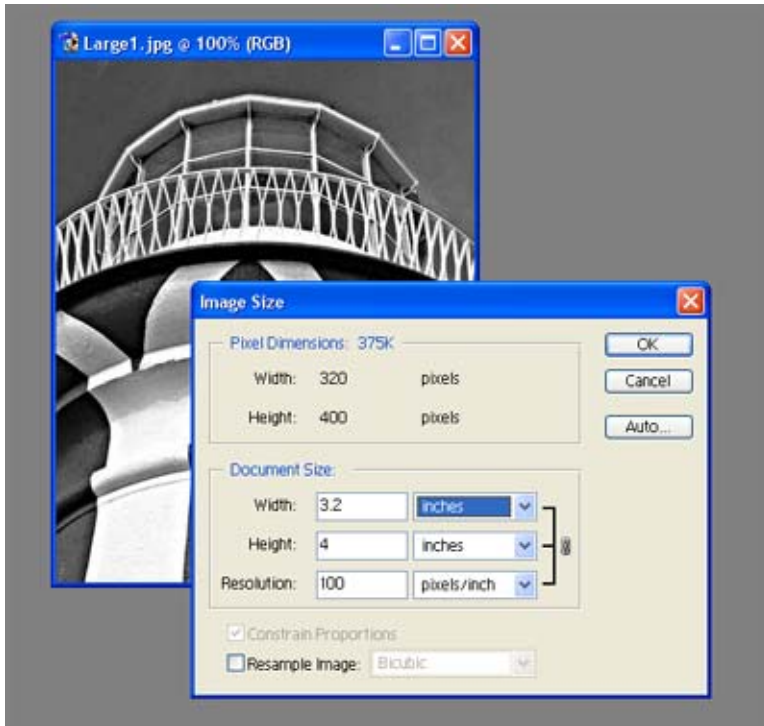
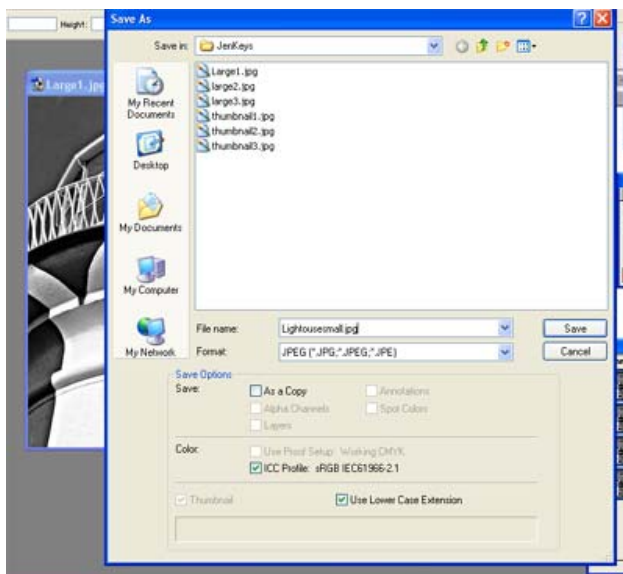


How to submit pages to Members Gallery



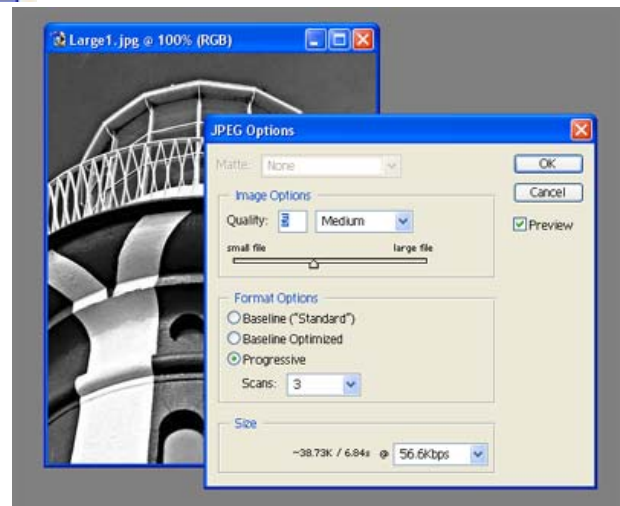
In photoshop go to Image|size on the menu bar and these are the setting you need.

Here are the steps to get it.



Open your picture and save it with a new name eg. Lighthousesmall and save it as a type jpg.

You don't need high quality for the web so choose a quality of about 5.



Now go to image|size and if you like to work in resolution – make sure resample image is turned off and change the resolution to 100 pixels per inch.

This will not alter the size of the picture just change the resolution

Now turn the resample image back on and change the size so the longest size is equal to 4 inches.

This will change the size

Now look at the picture – if it has been a dramatic size change a lot of details may have been lost and the sharp lines become blurry. Go to Filters|sharpen|unsharpmask to sharpen up these blurry lines.

Now save the picture again using its new name - then email it to bcpc@genica.com.au and I will put it on the web site.

The alternative is to save the pictures you would like placed on the website onto CD and let me do it

Or

Let me have the prints, slides or negatives and I will scan them and return them to you.